



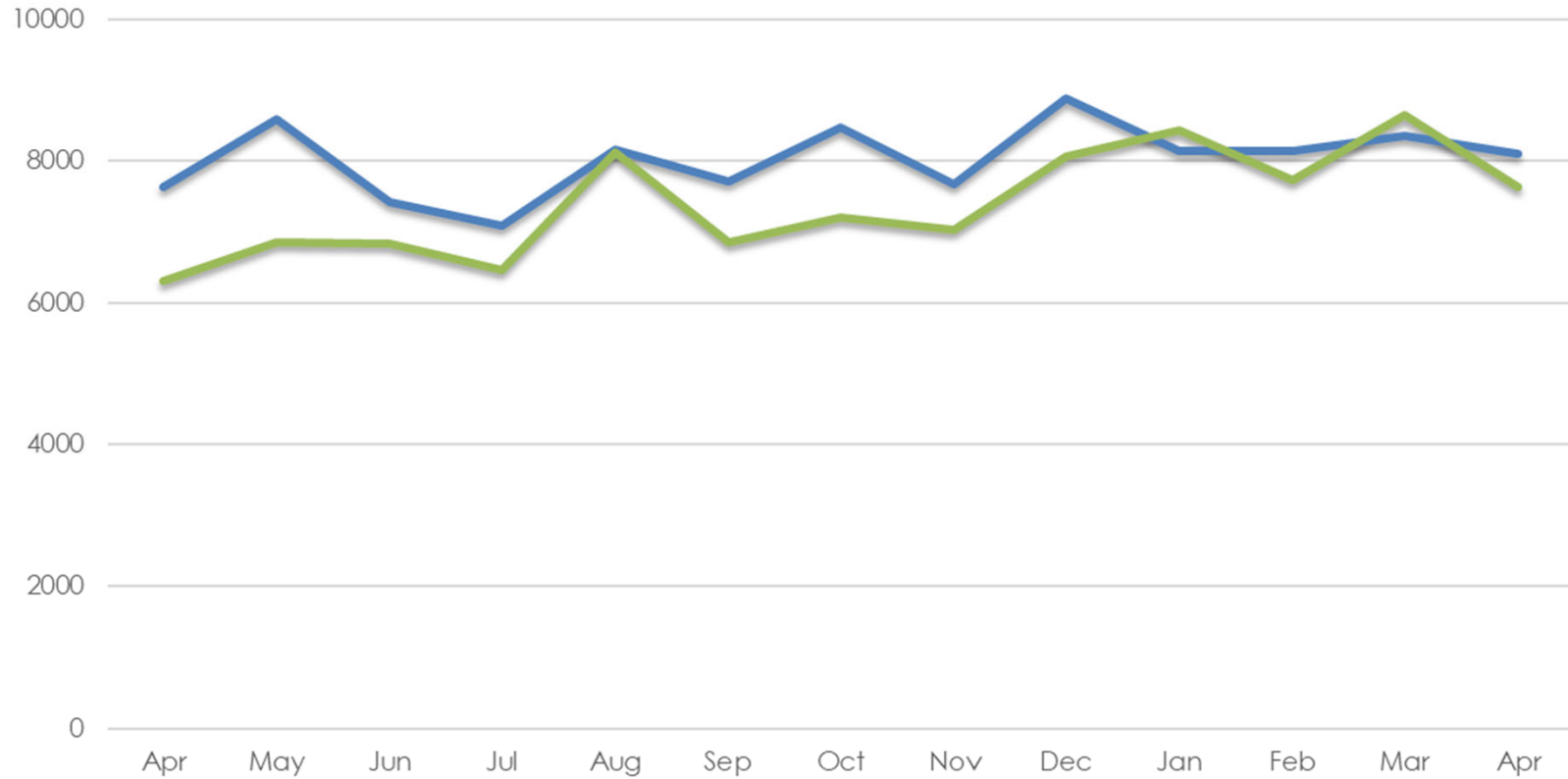
**ORGANIZATION
PERFORMANCE**

3	1852
62	110
429	75 262
3 054	63
135	455
93 293	3 494
..	138
..	95 153
..	720
..	2 251

Total CHC Encounters

FY 23 88,151
83,005

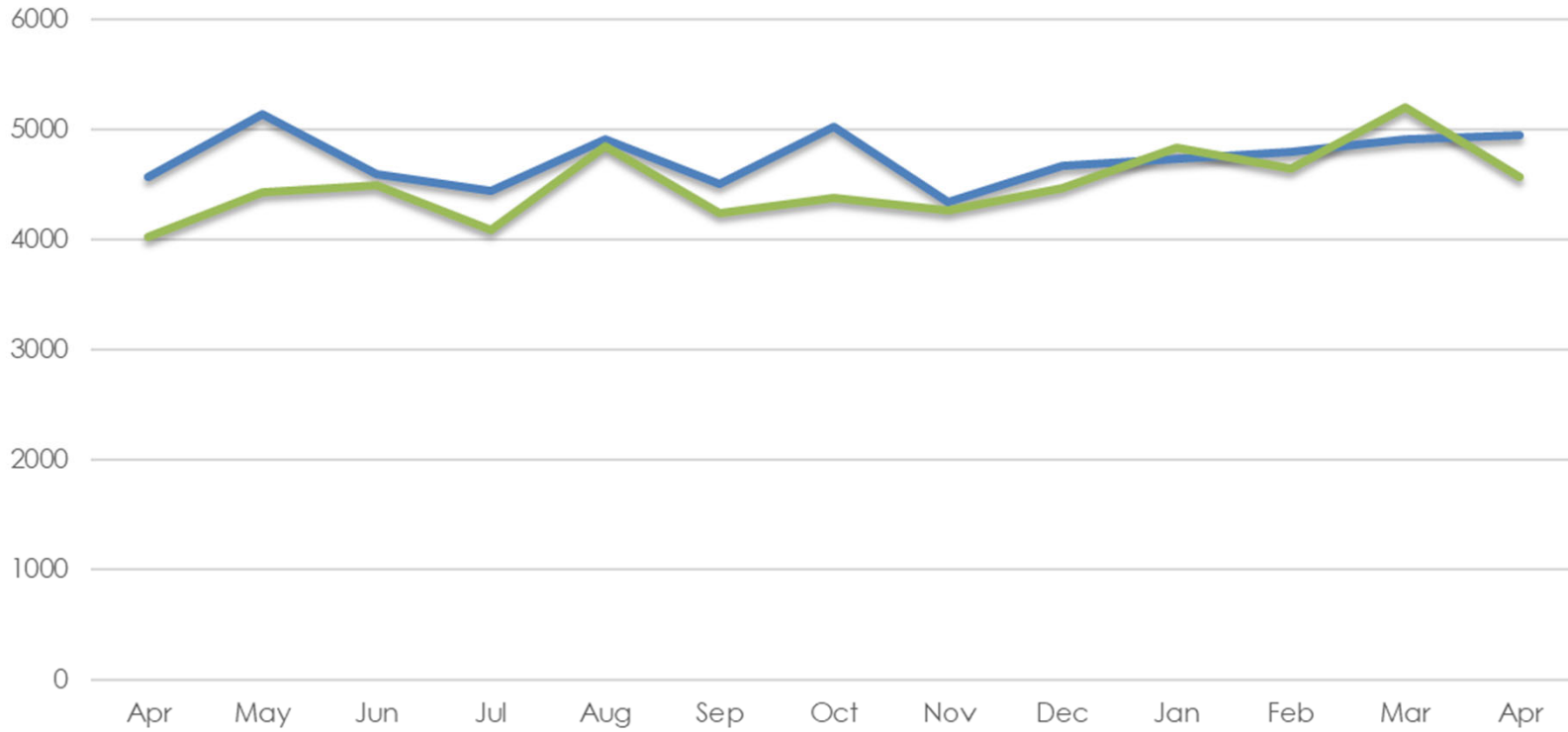
— Current Year — Prior Year



Total Provider Encounters Family Practice

FY 23 51,837
FY 22 50,003

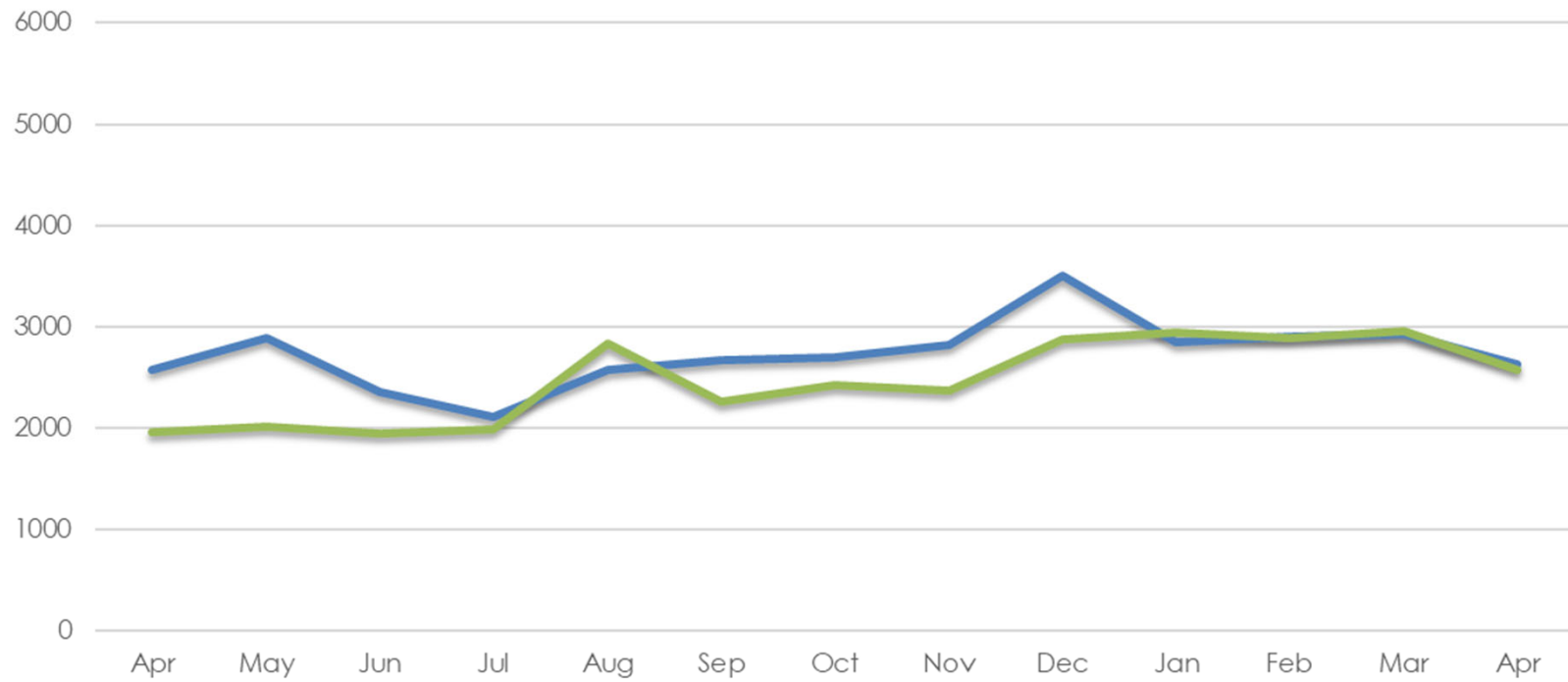
— Current Year — Prior Year



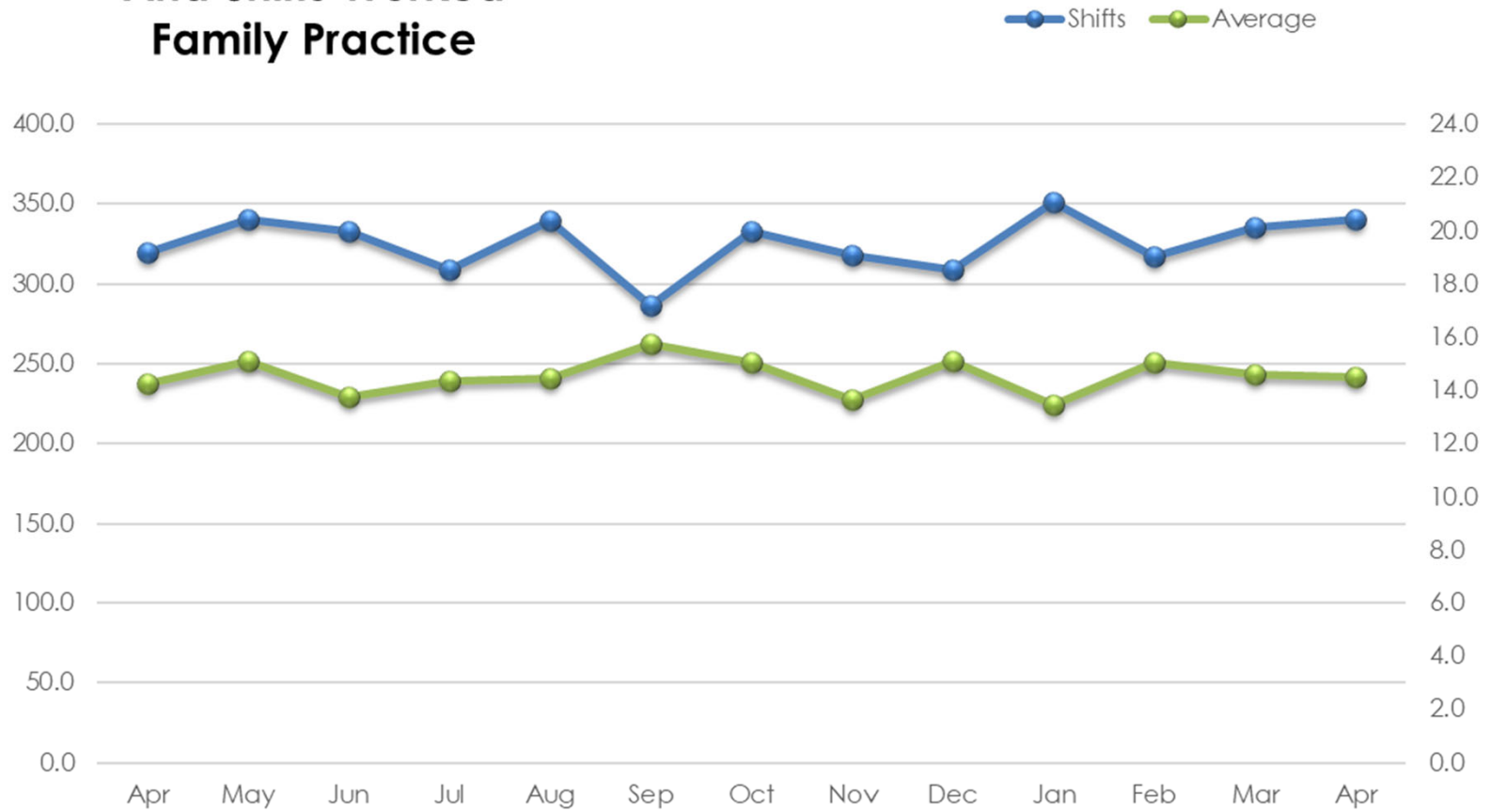
Total Provider Encounters Pediatrics

FY 23 30,083
28,127

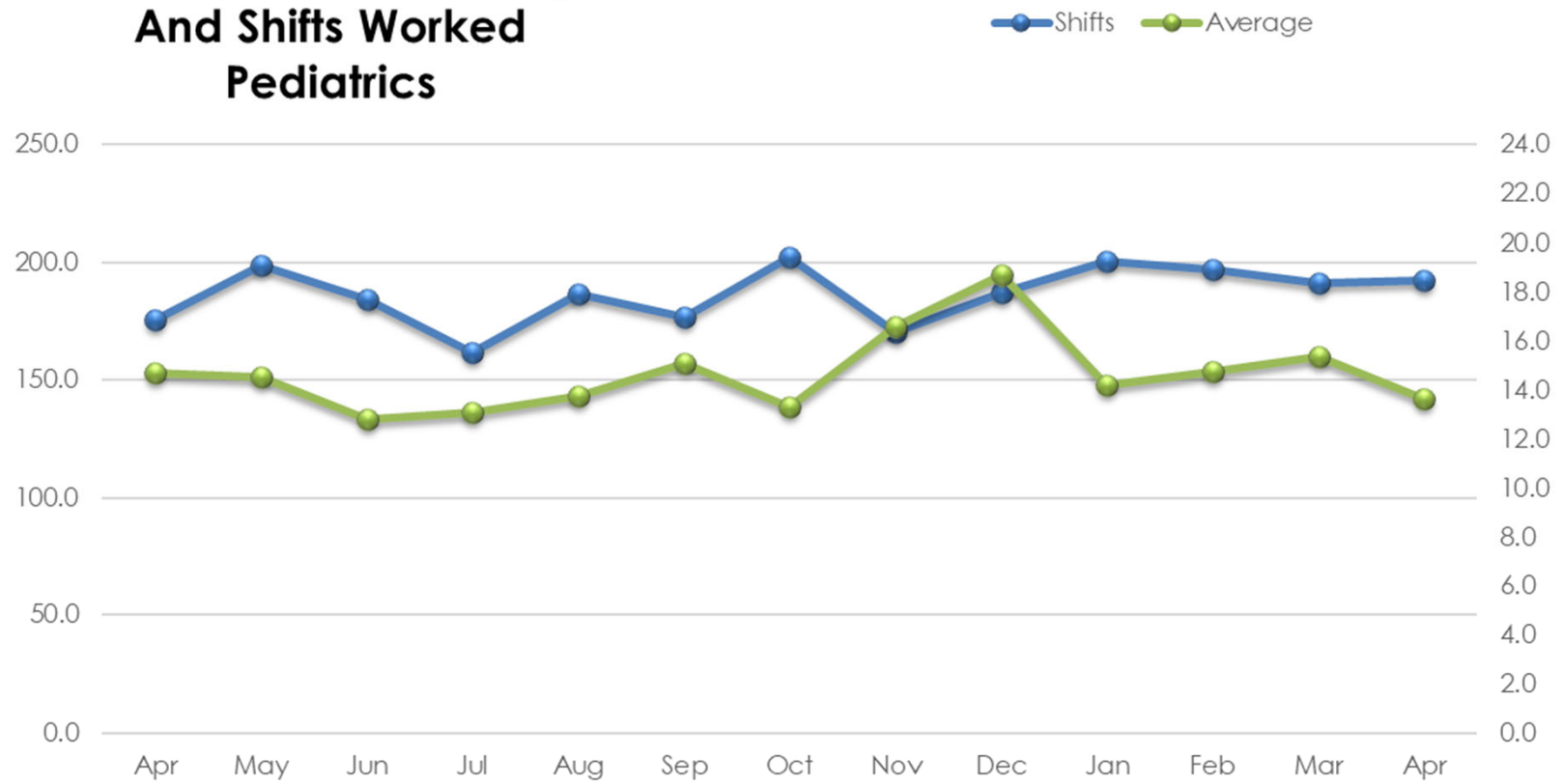
— Current Year — Prior Year



Average Visits Per Day And Shifts Worked Family Practice

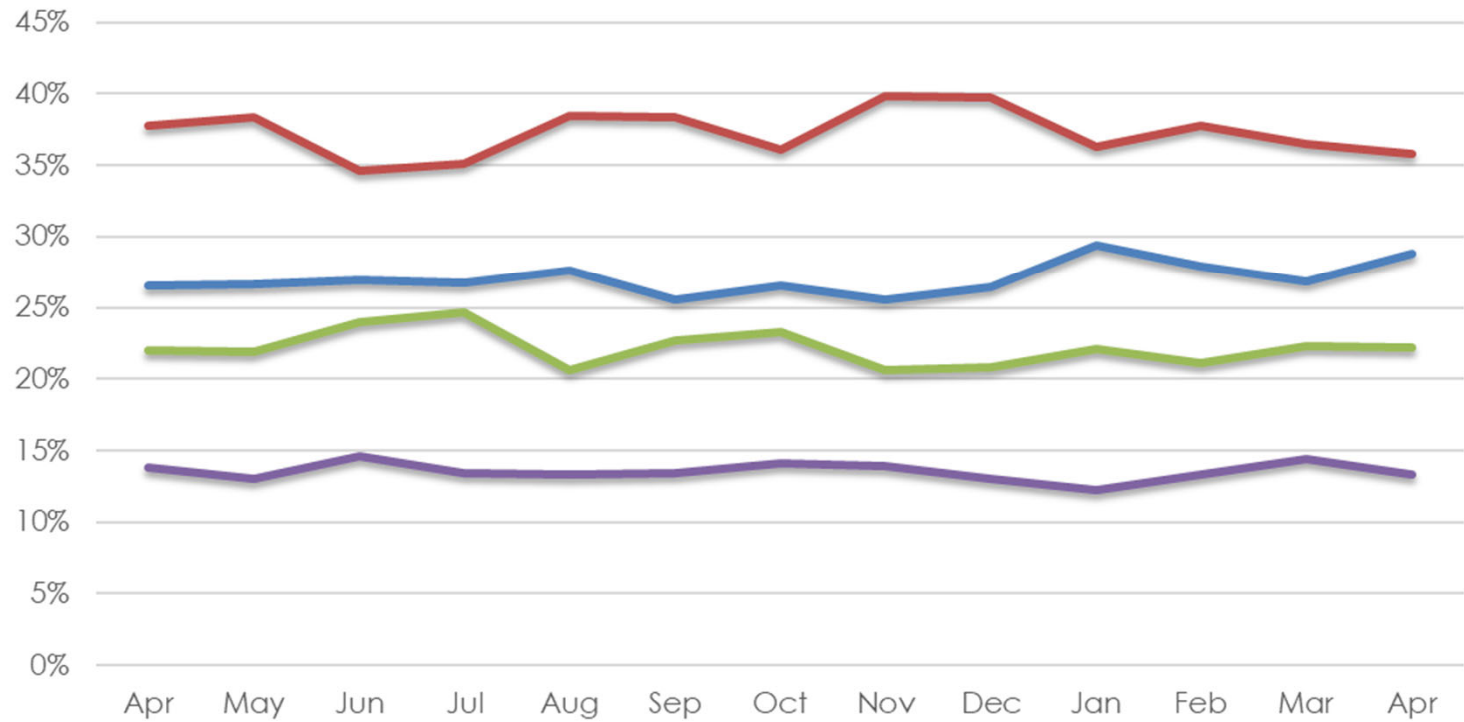


Average Visits Per Day And Shifts Worked Pediatrics



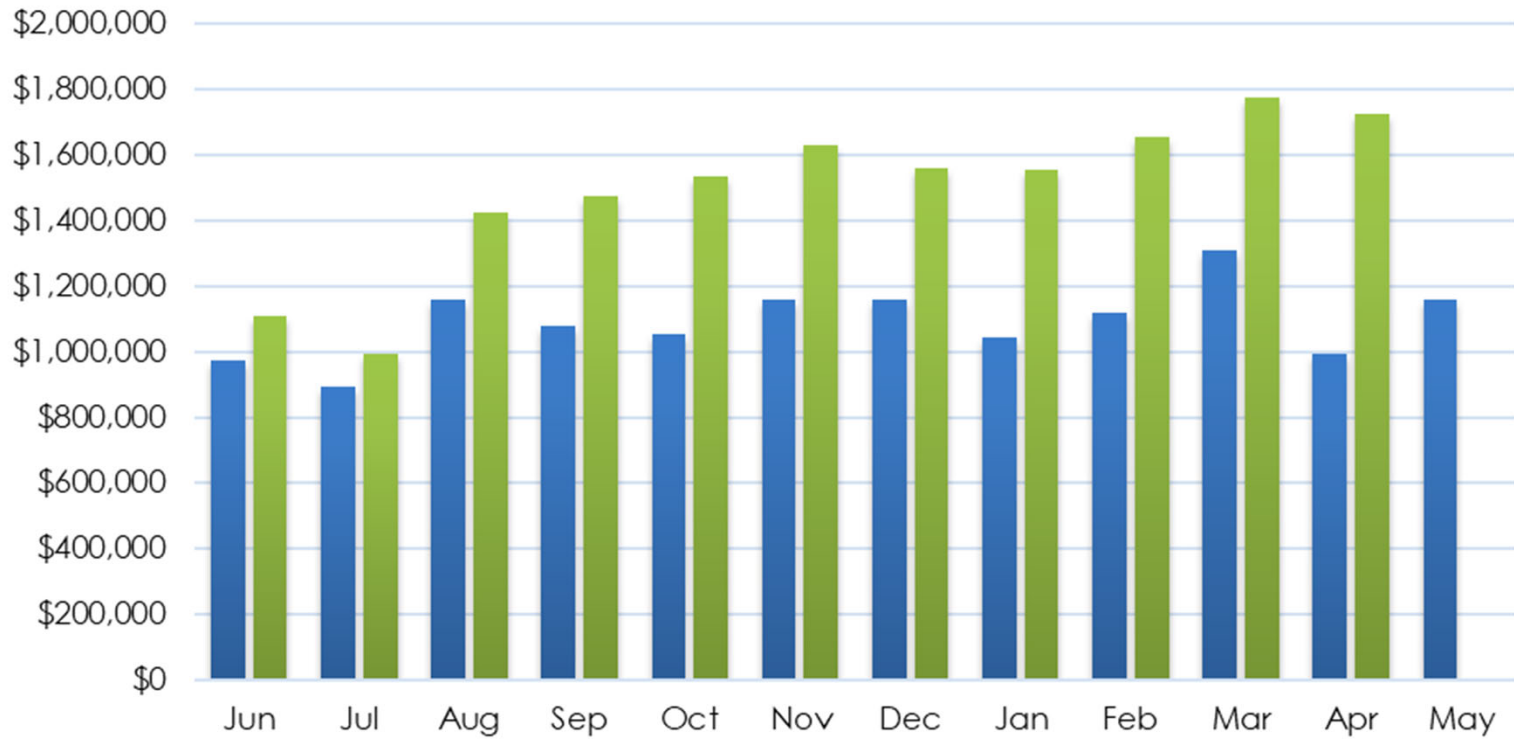
CHC Visits by Payor

Commercial Medicaid Medicare Self Pay



CHC Total Collections Comparative

■ Total Payments FY 23 ■ Total Payments FY 24



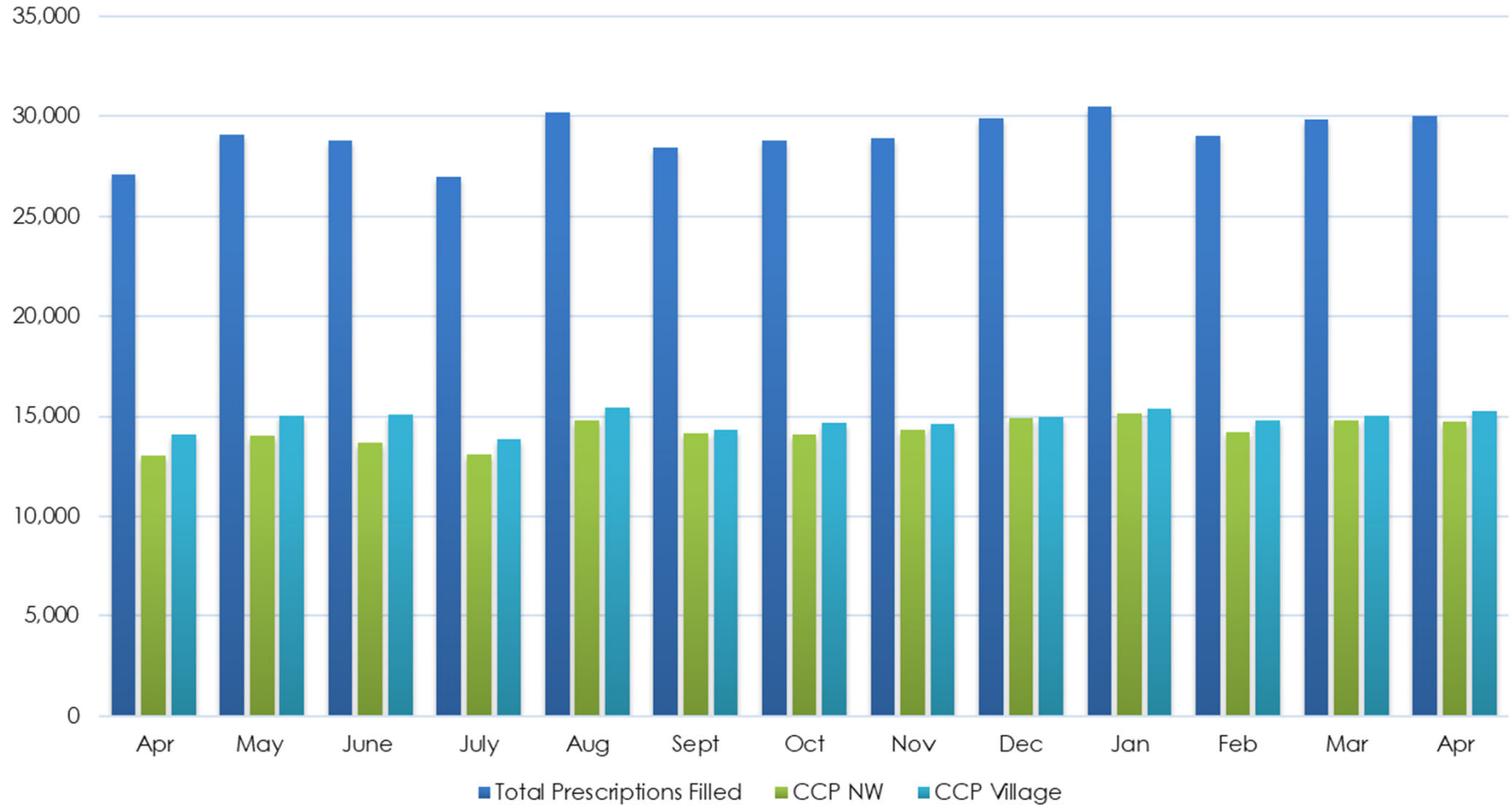
Total AR - Days

Min: 26.3 Max: 43.1 Most Recent: 41.5



- 7 Days
- 14 Days
- 30 Days
- 60 Days
- 90 Days
- 13 Months**
- MTD
- YTD

Prescriptions Filled



FQHC Vs Retail

